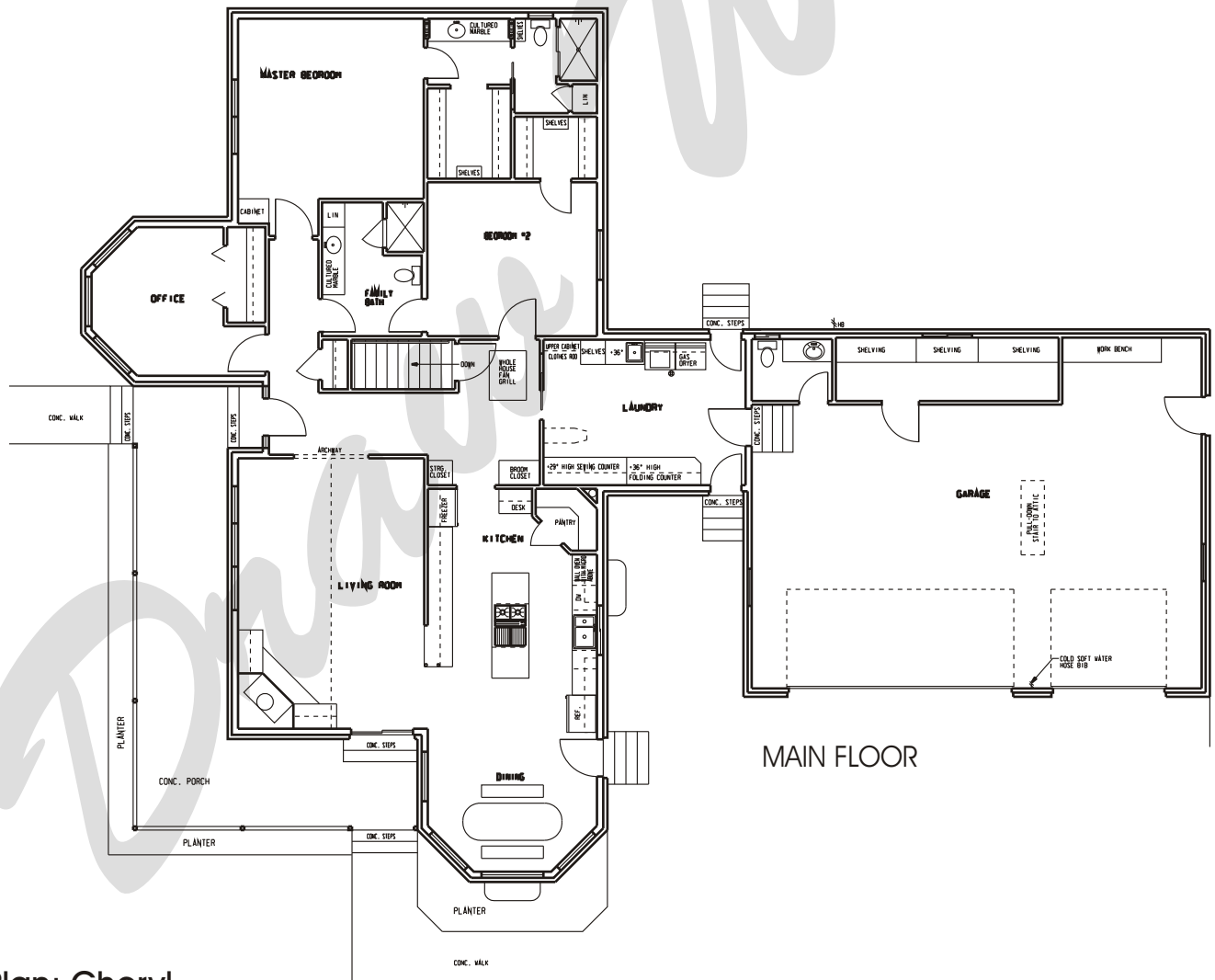


# Draw Works

P.O. Box 3294 St. George, Utah 84771 (435)634-1450

WWW.TheBestHomePlans.com



## Plan: Cheryl

Square Feet: 2,213 Main 1,150 Basement

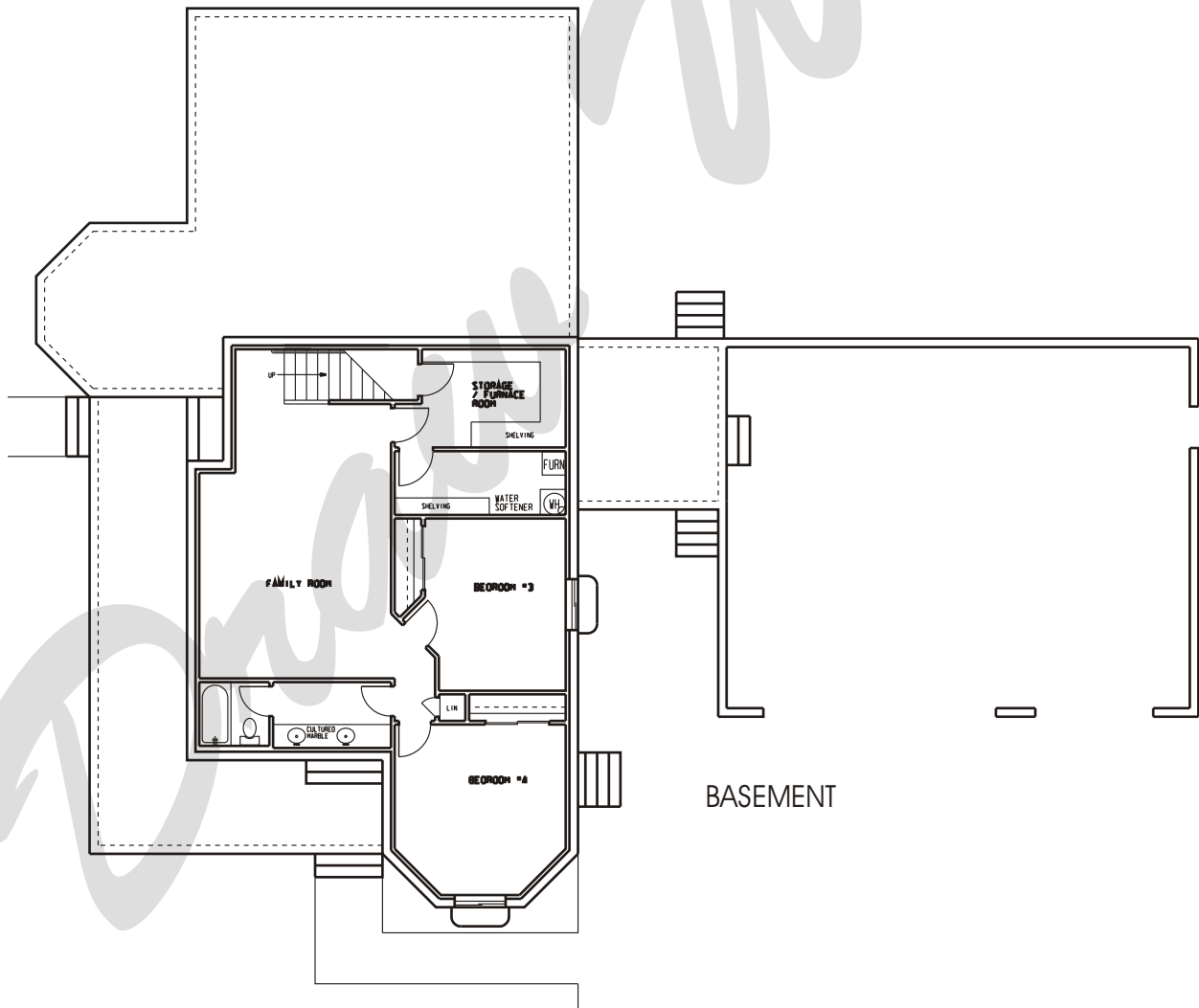
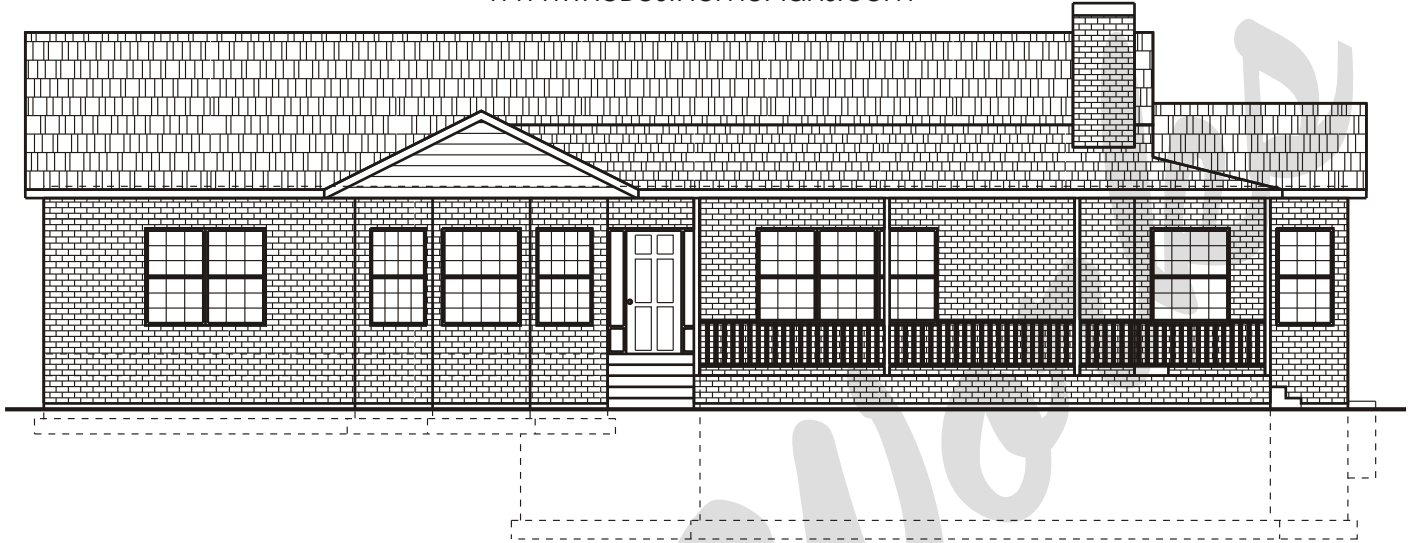
Overall Dimensions: 91'-2" X 70'-6"

This plan is copyrighted by Draw Works and is protected under the copyright laws of the United States and may not be copied in any form. Draw Works will pursue prosecution of any violations.

# Draw Works

P.O. Box 3294 St. George, Utah 84771 (435)634-1450

WWW.TheBestHomePlans.com



## Plan: Cheryl

Square Feet: 2,213 Main 1,150 Basement

Overall Dimensions: 91'-2" X 70'-6"

This plan is copyrighted by Draw Works and is protected under the copyright laws of the United States and may not be copied in any form. Draw Works will pursue prosecution of any violations.