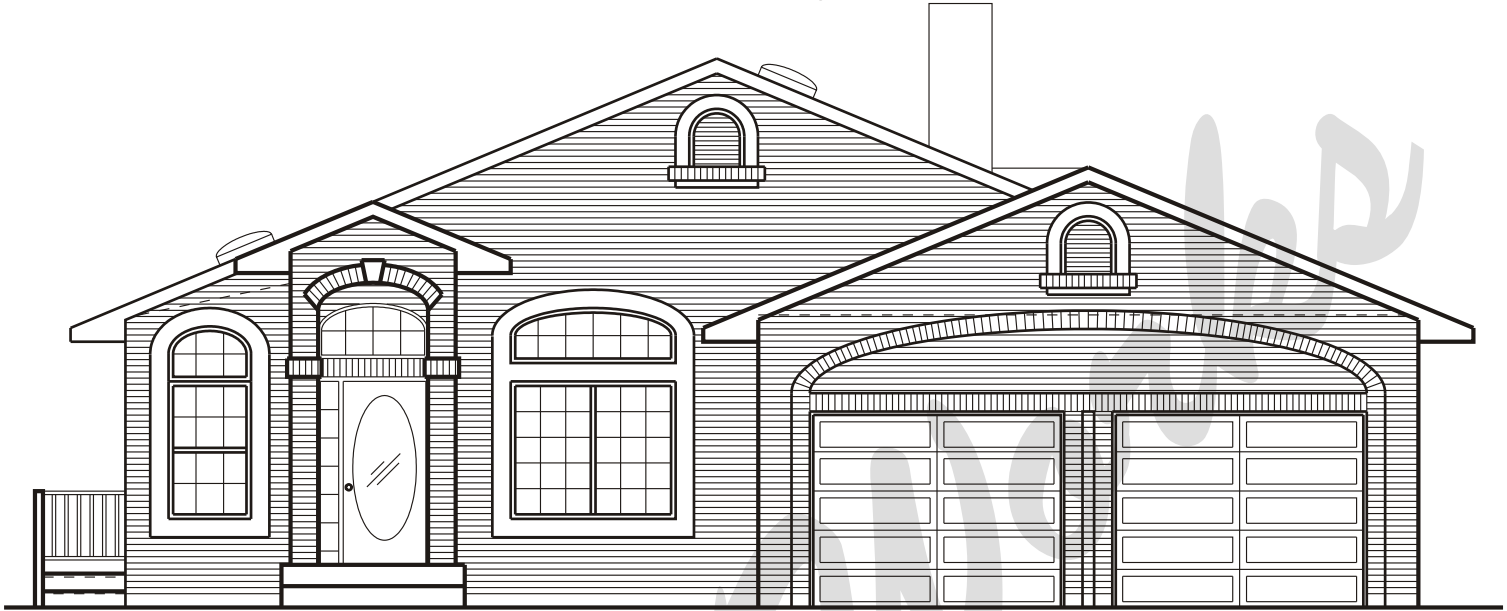


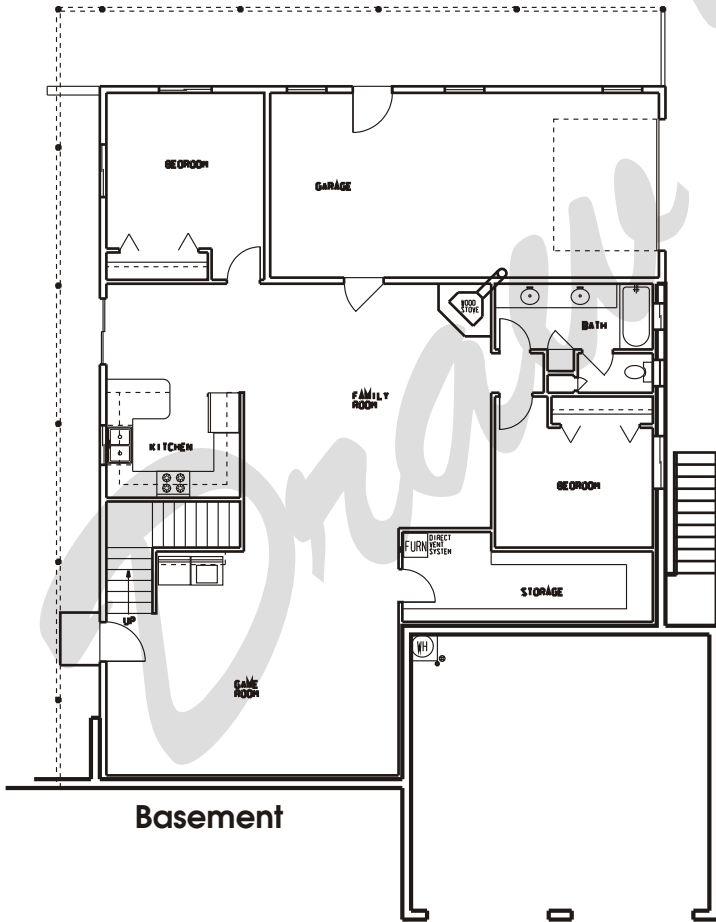
Draw Works

P.O. Box 3294 St. George, Utah 84771 (435)634-1450

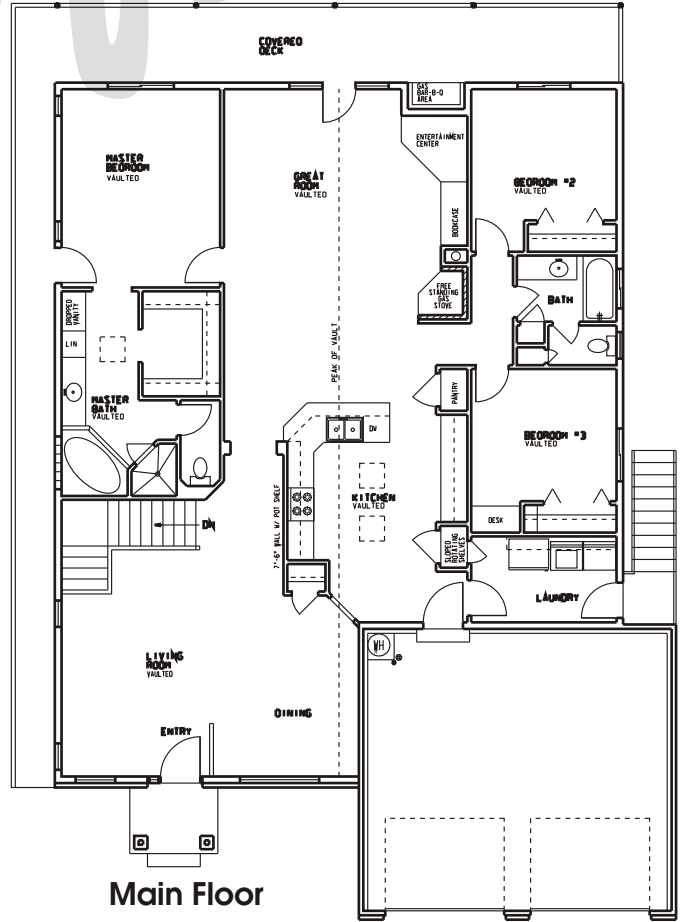
www.thebesthomeplans.com



Front Elevation



Basement



Main Floor

Plan: Gene

Square Feet: Main 2,048 Basement 2,068

Overall Dimensions: 47'-0" X 69'-4"

This plan is copyrighted by Draw Works and is protected under the copyright laws of the United States and may not be copied in any form. Draw Works will pursue prosecution of any violations.