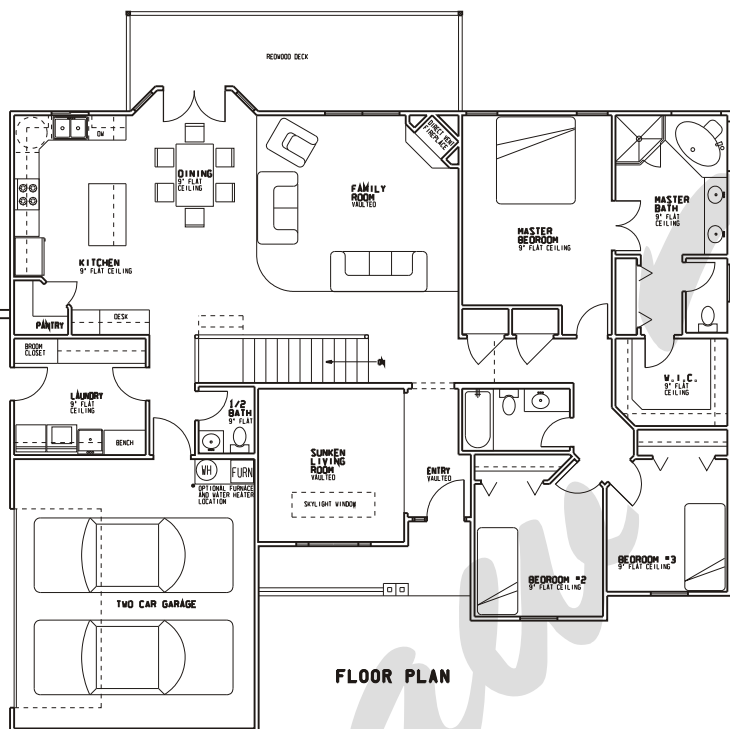
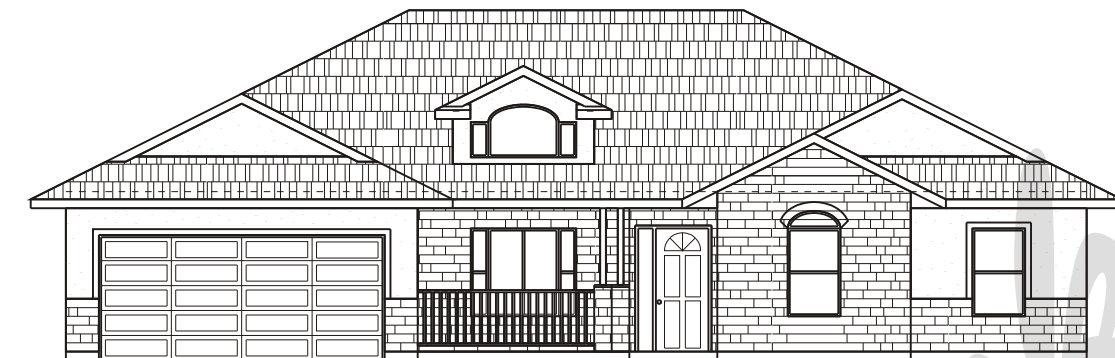


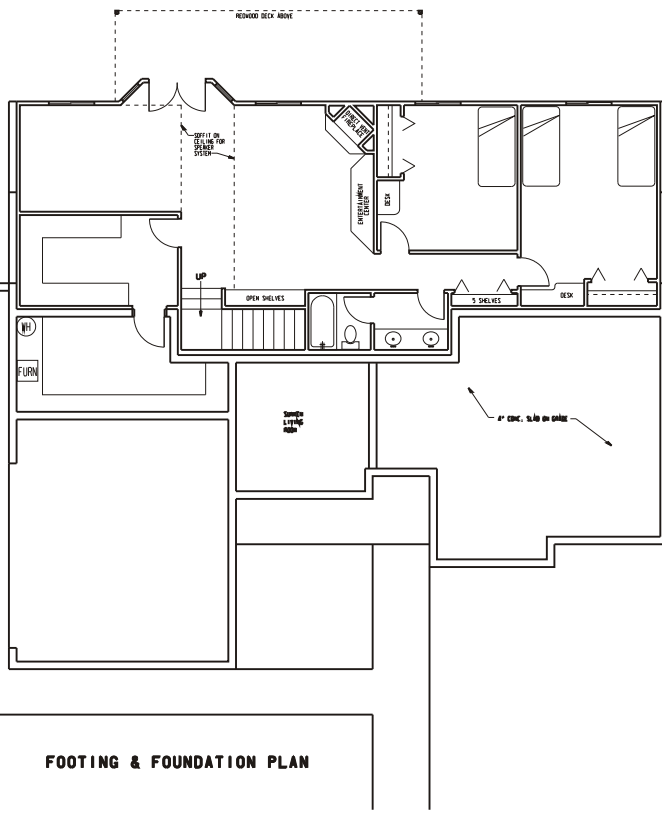
Draw Works

P.O. Box 3294 St. George, Utah 84771 (435)634-1450

www.thebesthomeplans.com



FLOOR PLAN



FOOTING & FOUNDATION PLAN

Plan: Krystal

Square Feet: 2,006 Main 1,377 Basement

Overall Dimensions: 58'-0" X 58'-0"

This plan is copyrighted by Draw Works and is protected under the copyright laws of the United States and may not be copied in any form. Draw Works will pursue prosecution of any violations.