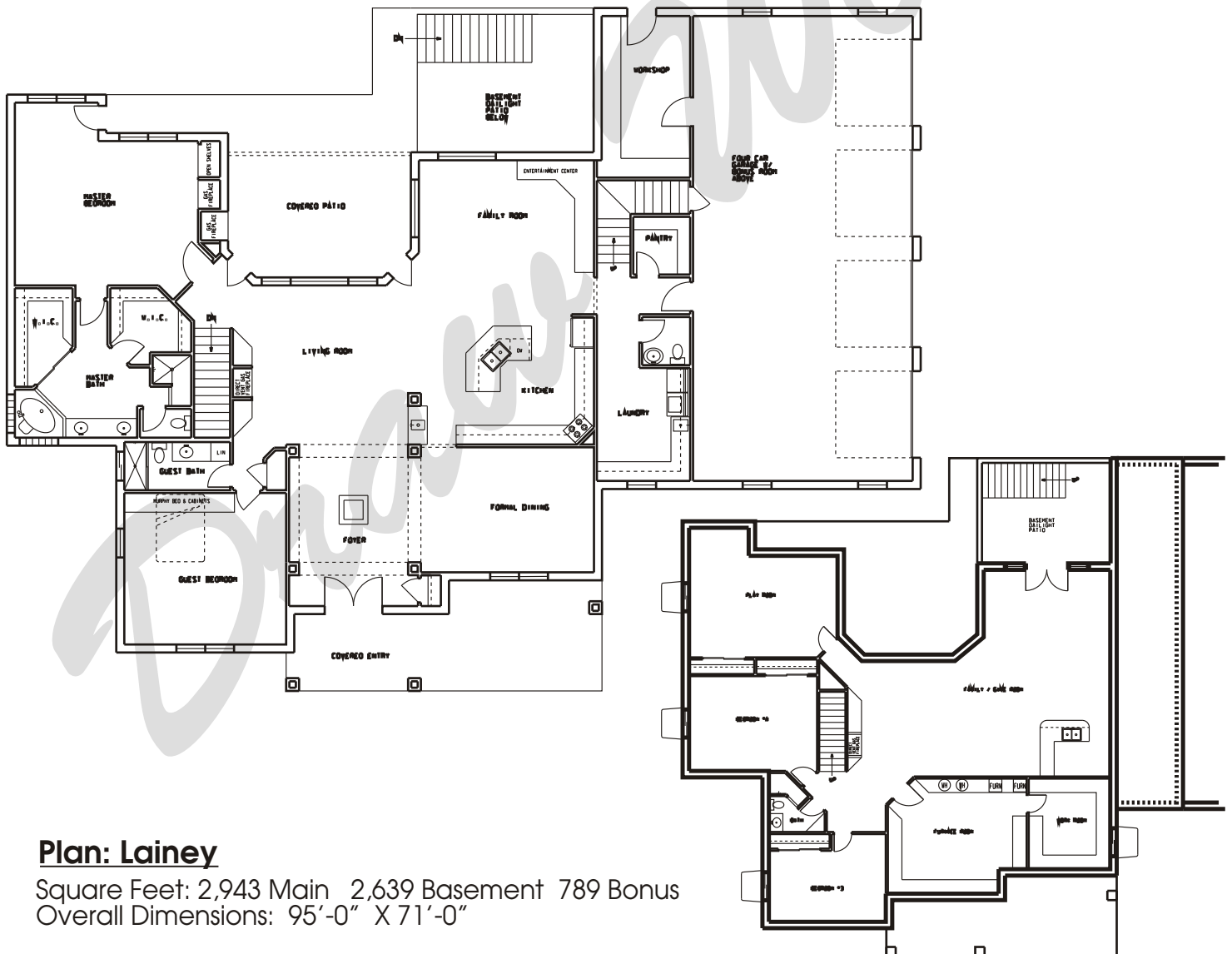
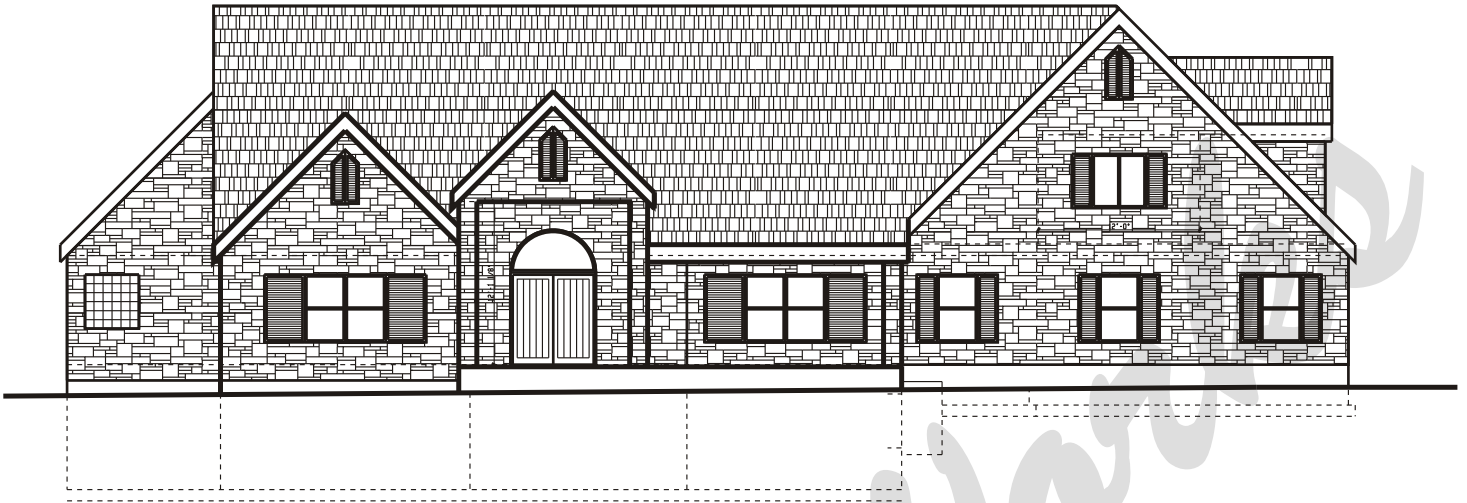


Draw Works

P.O. Box 3294 St. George, Utah 84771 (435)634-1450

Email: kthomas@infowest.com



Plan: Lainey

Square Feet: 2,943 Main 2,639 Basement 789 Bonus
Overall Dimensions: 95'-0" X 71'-0"

This plan is copyrighted by Draw Works and is protected under the copyright laws of the United States and may not be copied in any form. Draw Works will pursue prosecution of any violations.