

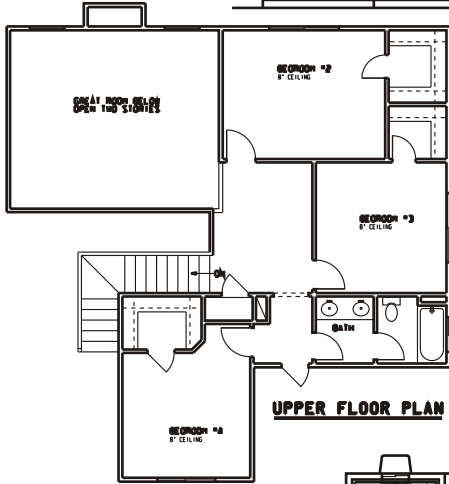
Draw Works

P.O. Box 3294 St. George, Utah 84771 (435)634-1450

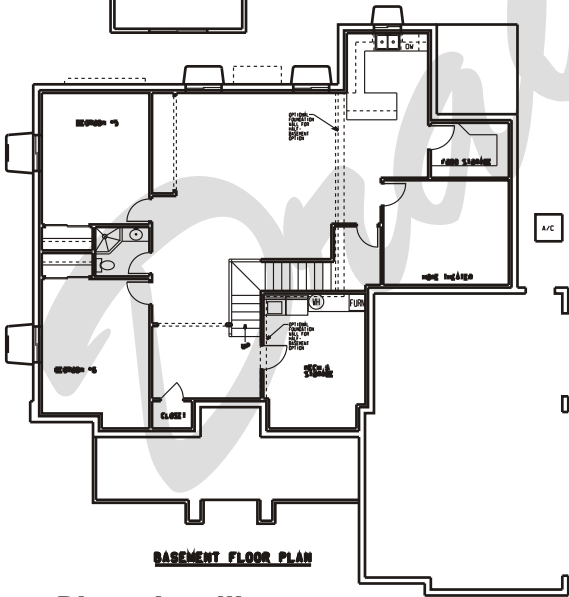
www.thebesthomeplans.com



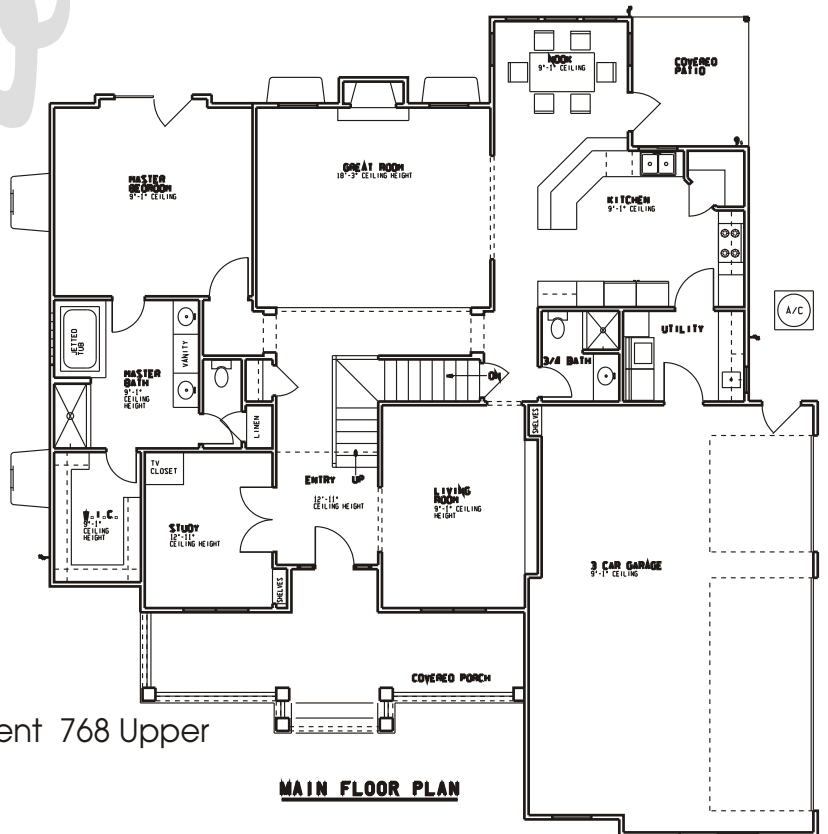
FRONT ELEVATION



UPPER FLOOR PLAN



BASEMENT FLOOR PLAN



MAIN FLOOR PLAN

Plan: Lucille

Square Feet: 1,889 Main 1,889 Basement 768 Upper
Overall Dimensions: 59'-4" X 63'-4"

This plan is copyrighted by Draw Works and is protected under the copyright laws of the United States and may not be copied in any form. Draw Works will pursue prosecution of any violations.